

Open geo-data for innovative services and user applications towards Smart Cities

The Project

The ICT-PSP European project GeoSmartCity establishes a cross-platform, re-usable and open hub able to publish open geographic information and to provide specialized services based on open standards service protocols.

The potentiality of the GeoSmartCity cross-platform toolkit has been demonstrated through the development of 11 operative and re-usable pilot cases in the frame of two scenarios: **Green-Energy** and **Underground**.

Key Objectives

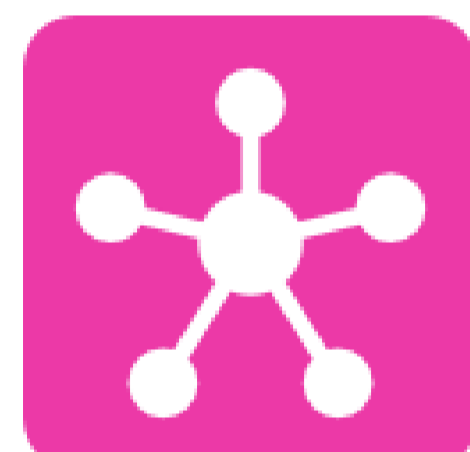
- GeoSmartCity has its main objective in creating a framework in which Geo Open Data from the cities are exploited towards the Smart City paradigm allowing the developing of various added value applications and new specialized services.
- GeoSmartCity aims at developing such a virtuous framework as well as a line of activity supporting the European Cities in their Smart process.

The Partnership

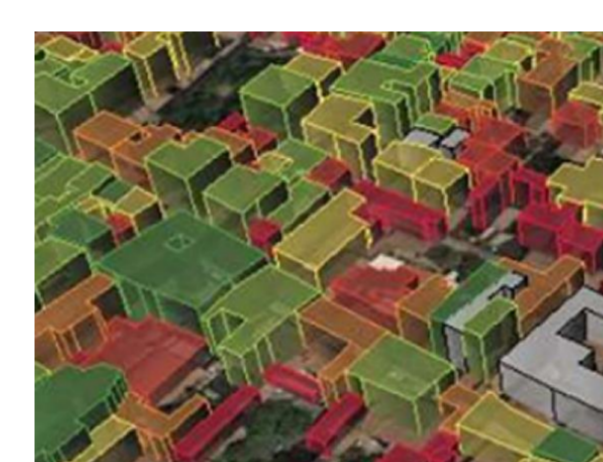


The GeoSmartCity Products

GeoSmartCity Hub



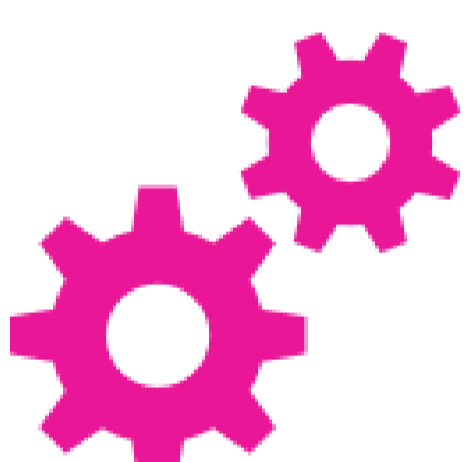
A cross-platform, re-usable and open hub able to publish open geographic information and to provide specialised services based on open standards services.



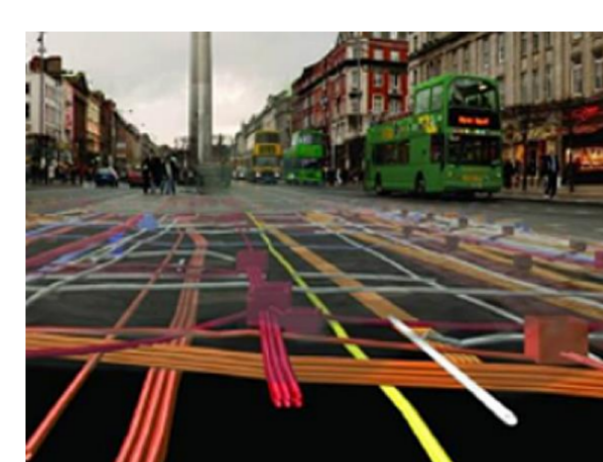
Green Energy Scenario

Operative and re-usable pilot cases to facilitate diffusion and management of renewable energy within cities.

Innovative Services



Services platform to View, analyze, extract data from the GeoSmartCity OpenData Hub; Universal Discovery Services; BI and Geoprocessing service platform; Ingestion and data integration engine.



Underground Scenario

Operative and re-usable pilot cases to support integrated management of underground utilities infrastructures .

GI Open Data Repository and Target Data Models



Open and proprietary datasets including geo-spatial information in an interoperable infrastructure based on open standards.



GeoSmartCity Training Framework

Designed in order to make available existing knowledge and transfer the outcomes of the project towards the target groups of users. The Training Framework supports dissemination and exploitation, fostering Capacity Building

The GeoSmartCity Hub

The Hub's server software components expose interfaces for **integrating, visualizing, analysing and processing spatial and non-spatial data sources**.

The Hub allows users to upload or connect their data sources, configure map visualizations and publish data through a web based user interface.

The Hub consists of a virtual machine with a database server, a triple store, a catalog server, a web server, an administration application for managing data content and a rich Web Service API.

- ✓ To know more about applications using the Hub visit hub.geosmartcity.eu
- ✓ To know more about applications using the Hub visit www.geosmartcity.eu/showcase
- ✓ To know more how the Hub can be integrated in your organisation **contact us now**