

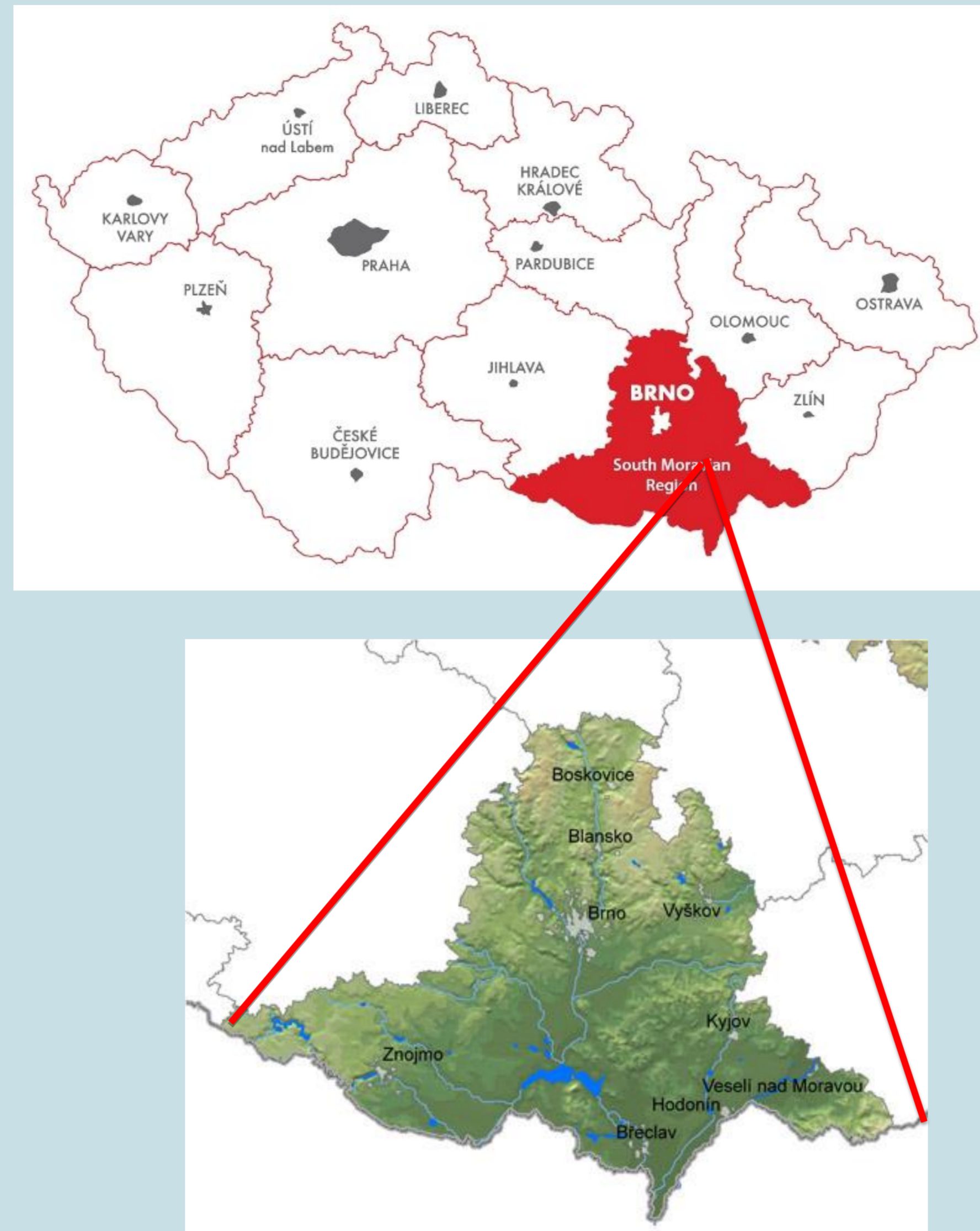
South Moravian Region Pilot: Underground Scenario

Pilot Leader: Intergraph

Overview

GeoSmartCity contributes to the Smart City implementation by establishing a cross-platform, re-usable and open hub able to publish open geographic information and to provide specialized services based on open standards.

The GeoSmartCity cross-platform toolkit and operational methodology allow further integration of third-party data (open or restricted) as well as crowd-sourced data. The potentiality of the toolkit will be demonstrated through the development of 11 operative and re-usable pilot cases in the frame of two scenarios: Green-Energy scenario, to facilitate diffusion and management of renewable energy within cities, and Underground scenario, to support integrated management of underground utility infrastructures.



General Information

Population: 1,140,000 inhabitants
Surface: 7,195 km²

The South Moravian Region is an administrative unit of the Czech Republic, located in the south-western part of its historical region of Moravia. The region is home to the Czech Republic's second largest city Brno, an important judiciary city, a university town and a Central European trade fair centre.

The South Moravian Region lies in the southeast of the Czech Republic on the borders with Austria and Slovakia. The region enjoys excellent transport links and a strategic position on the intersection of trans-European long-distance road and rail routes which are important arteries connecting the west of Europe with the east, and the north with the south.



Description of the pilot deployment:

The main aim of the deployment is activation of services enabling on-line fieldwork using mobile devices, such as mobile phones, tablets and laptops. The deployment should target two areas.

Area of volunteered geographic information focused on citizen to public administration communication. Implemented services will allow anybody equipped with a smart phone report a problem on public infrastructure. Area of open geographic information will enable existence of many useful applications. For instance, an application "What's beneath me?" will make use of open data related to surface, underground, and potentially other sources.

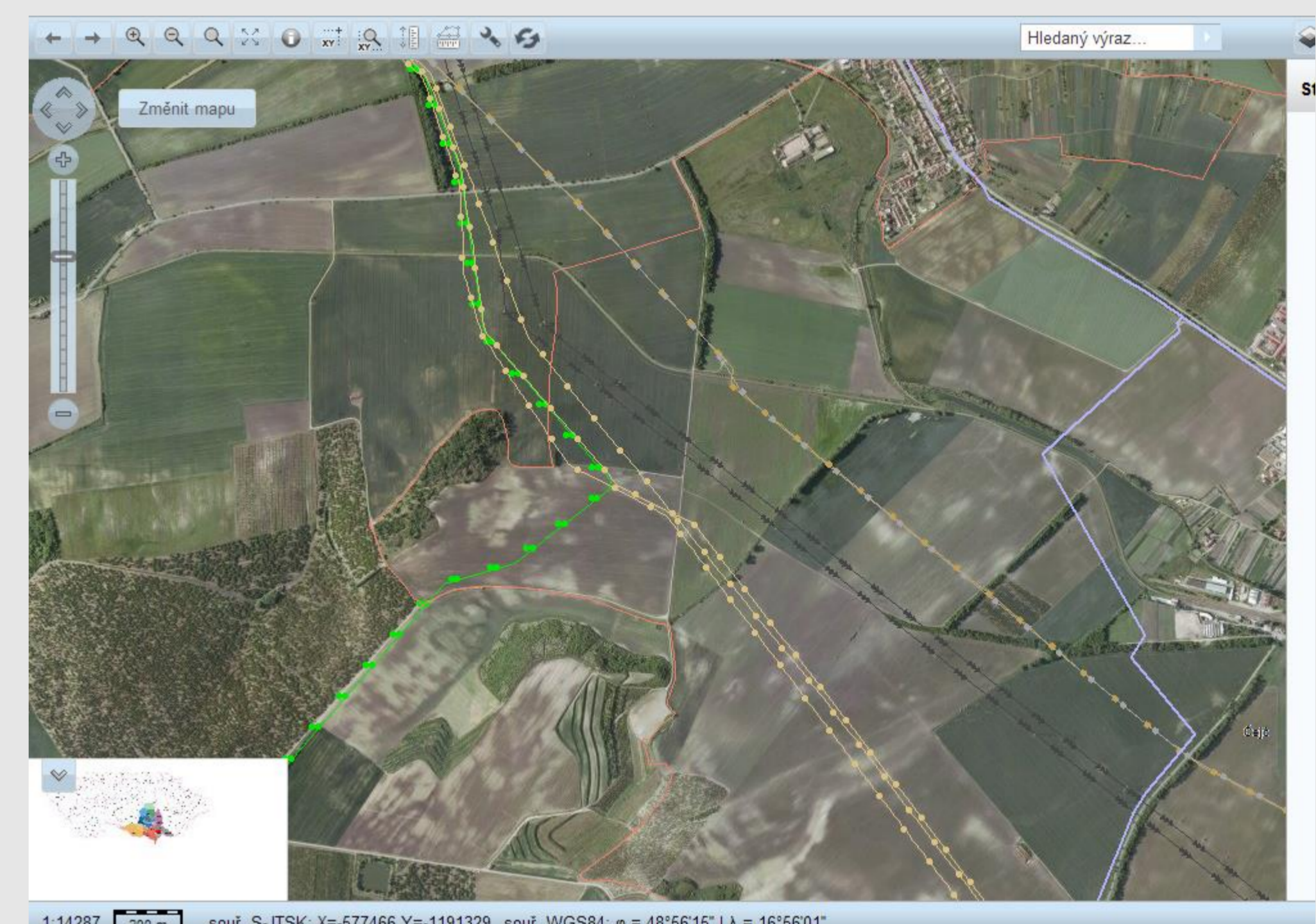
Area of restricted geographic information enhances area of open geographic information mainly by ability to modify existing data or create completely new one. Municipalities, as typical administrators of underground infrastructure, and companies specialized in designing and maintaining of underground infrastructure will make use of it.

Objective

Beneficiaries will be cities and villages of South Moravian Region as well as companies offering services related to underground infrastructure.

Their usage of services developed by the project will impact mainly:

- Accuracy improvement of existing underground plans and addition of new ones thanks to enabled on-line feedback.
- Improved communication between citizens and public administration based on volunteered geographic information.
- Improvement of planning of interventions.



Web portal for regional planning with underground networks examples (<http://up.kr-jihomoravsky.cz>).



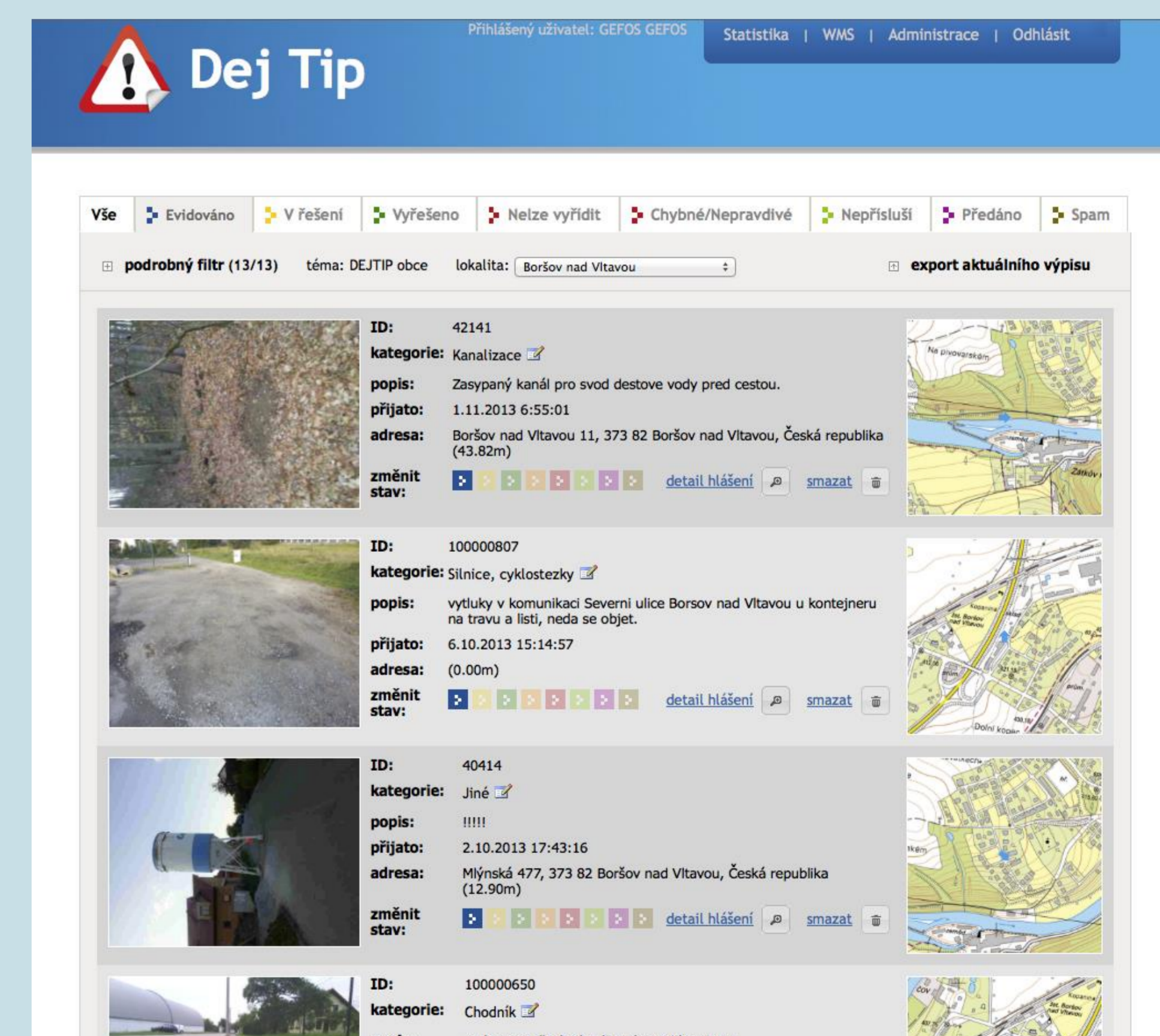
Mobile client for VGI collection

Specific Data sources used for the scenario:

- ✓ Water Networks
- ✓ Sewer Networks
- ✓ Gas Networks
- ✓ Electricity network
- ✓ Telecommunication networks
- ✓ Oil networks

Stakeholders

- Public Administration
- Public Officers
- Utility Companies
- Citizens



Web portal for VGI inputs visualization and management.